

Anti-Mouse IgG2a (Gamma 2a chain) (Fluorescein Conjugated) Secondary Antibody
Rabbit Polyclonal, Fluorescein (FITC)
Catalog # ASR2750**Specification****Anti-Mouse IgG2a (Gamma 2a chain) (Fluorescein Conjugated) Secondary Antibody - Product Information**

Description	Anti-MOUSE IgG2a (Gamma 2a chain) (RABBIT) Antibody Fluorescein Conjugated
Host	Rabbit
Conjugate	Fluorescein (FITC)
FP Value	2.4 moles Fluorescein (FITC) per mole of IgG
Target Species	Mouse
Clonality	Polyclonal
Application	IF, FC
Application Note	FLISA 1:10,000-1:50,000;IF Microscopy 1:1,000-1:5,000;FlowCytometry 1:500-1:2,500
Physical State	Lyophilized
Host Isotype	IgG
Target Isotype	IgG2a
Buffer	0.02 M Potassium Phosphate, 0.15 M Sodium Chloride, pH 7.2
Immunogen	Mouse IgG2a heavy chain
Reconstitution Volume	1.0 mL
Reconstitution Buffer	Restore with deionized water (or equivalent)
Stabilizer	10 mg/mL Bovine Serum Albumin (BSA) - Immunoglobulin and Protease free
Preservative	0.01% (w/v) Sodium Azide

Anti-Mouse IgG2a (Gamma 2a chain) (Fluorescein Conjugated) Secondary Antibody - Additional Information**Shipping Condition****Ambient****Purity**

This product was prepared from monospecific antiserum by immunoaffinity chromatography using Mouse IgG2a coupled to agarose beads followed by solid phase adsorption(s) against a panel of immobilized mouse and human serum proteins resulting in a conjugated antibody designed for flow cytometry. Specificity was confirmed by ELISA at less than 1% cross reactivity against other mouse or human heavy or light chain isotypes.

Storage Condition

Store vial at 4° C prior to restoration. For extended storage aliquot contents and freeze at -20° C or below. Avoid cycles of freezing and thawing. Centrifuge product if not completely clear after standing at room temperature. This product is stable for several weeks at 4° C as an undiluted liquid. Dilute only prior to immediate use.

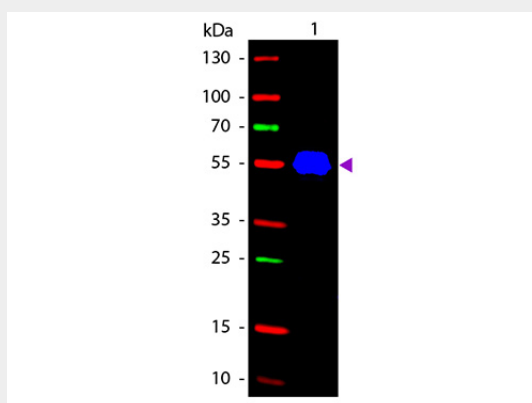
Precautions Note

This product is for research use only and is not intended for therapeutic or diagnostic applications.

Anti-Mouse IgG2a (Gamma 2a chain) (Fluorescein Conjugated) Secondary Antibody - Protein Information**Anti-Mouse IgG2a (Gamma 2a chain) (Fluorescein Conjugated) Secondary Antibody - Protocols**

Provided below are standard protocols that you may find useful for product applications.

- [Western Blot](#)
- [Blocking Peptides](#)
- [Dot Blot](#)
- [Immunohistochemistry](#)
- [Immunofluorescence](#)
- [Immunoprecipitation](#)
- [Flow Cytometry](#)
- [Cell Culture](#)

Anti-Mouse IgG2a (Gamma 2a chain) (Fluorescein Conjugated) Secondary Antibody - Images

Western blot of Fluorescein conjugated Rabbit Anti-Mouse IgG2a (Gamma 2a chain) secondary antibody. Lane 1: Mouse IgG2a. Lane 2: None. Load: 50 ng per lane. Primary antibody: None. Secondary antibody: Fluorescein rabbit secondary antibody at 1:1,000 for 60 min at RT. Blocking: MB-070 for 30 min at RT. Predicted/Observed size: 55 kDa, 55 kDa for Mouse IgG2a (Gamma 2a chain). Other band(s): None.

Anti-Mouse IgG2a (Gamma 2a chain) (Fluorescein Conjugated) Secondary Antibody - Background

This product is designed for immunofluorescence microscopy, fluorescence based plate assays (FLISA) and fluorescent western blotting. This product is also suitable for multiplex analysis, including multicolor imaging, utilizing various commercial platforms.